

HIGH FLOW PUMP

OPERATING INSTRUCTIONS

1. Lubrication

It's necessary to fill the gear cover with oil before using this pump. Fill with SAE 10 oil or equivalent lubricant up to the reference line through the lubrication bolt hole shown as below. As short lubricant can damage the gears, test and inspect the lubrication periodically can avoid troubles occur.

2. Discharging volume

Turn the handle in clockwise direction and discharge one liter per revolution.

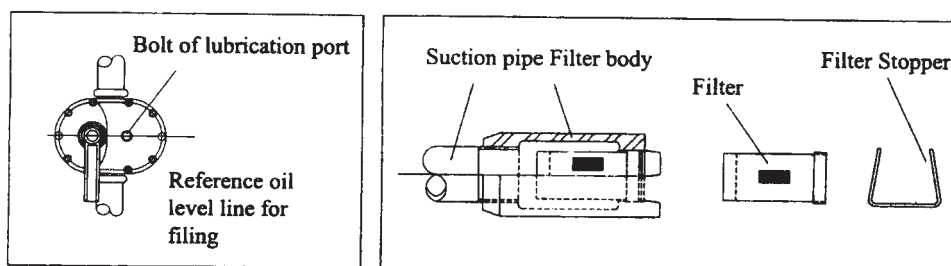
3. Filter

A filter of #60 mesh polyethylene net is provided, located at the bottom of suction pipe. Motor revolution becomes harder when the filter is clogged with dust.

Remove the filter periodically and clean with kerosene.

4. Caution

- a. The pump is suitable for most low viscosity liquid such as kerosene, unleaded petrol and low viscosity oil. It becomes heavier to turn while used with high viscosity liquid, which may shorten the life of the pump.
- b. Do not use this pump for transferring any solvent or chemical, which dissolves rubber.
- c. Do not pump and liquid containing dirt such as waste oil. Stained liquid may block the filter, prevent from discharging and damage the interior components.



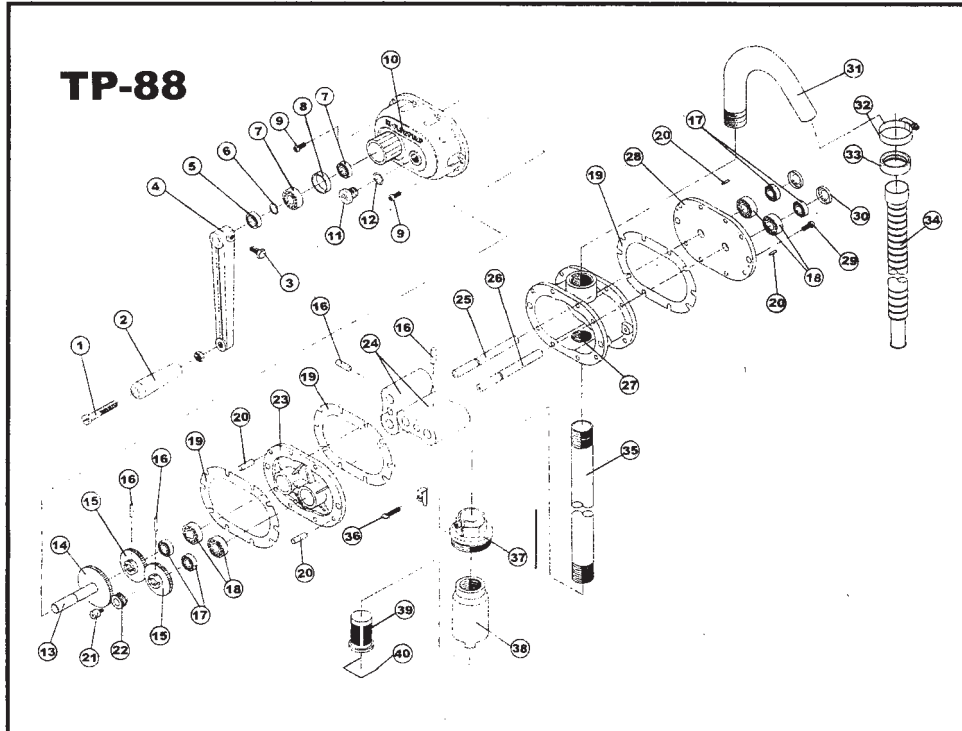
TROUBLE & REMEDY

Handle fails to turn	Dust clogging in the pump	Overhauling
	Gear breakage	Repair
Handle is heavy to turn	Dust clogging in the pump	Overhauling
	Filter blocking	Cleaning the filter
Turns but no discharge	Gear breakage	Repair
	Shaft & pin breakage	Repair

SPECIFICATION

Delivery Volume	One revolution per liter. 100liters per minute
Suction pipe	32m/m x 1.6t
Delivery Hose	32m/m x 1275mm
Strainer	#60 with mesh. Polyethylene
Net Weight	6 kg

PARTS LIST



No	PARTS LIST	QTY	No	PARTS LIST	QTY
1	Handle rivet	1	21	Screw	1
2	Handle	1	22	Pinion gear	1
3	Hexagon bolt	1	23	Inside Cover	1
4	Crank Arm	1	24	Roots	2
5	Oil Seal	1	25	Roots shaft	1
6	Stop ring	1	26	Roots shaft	1
7	Bearing	2	27	Housing	1
8	Bearing collar	1	28	Outside cover	1
9	Screw	10	29	Screw	10
10	Gear Cover	1	30	Bearing cap	2
11	Rhombic bolt	1	31	Spout	1
12	O-ring	1	32	Hose band	1
13	Reinforcement shaft	1	33	Red ring	1
14	Reinforcement gear	1	34	Delivery hose	1
15	Timing gear	2	35	Suction pipe	1
16	Pin	4	36	Thumb screw	1
17	Oil seal	4	37	Larger screw	1
18	Bearing	4	38	Filter body	1
19	Cover packing	3	39	Strainer	1
20	Pin	4	40	Filter stopper	1