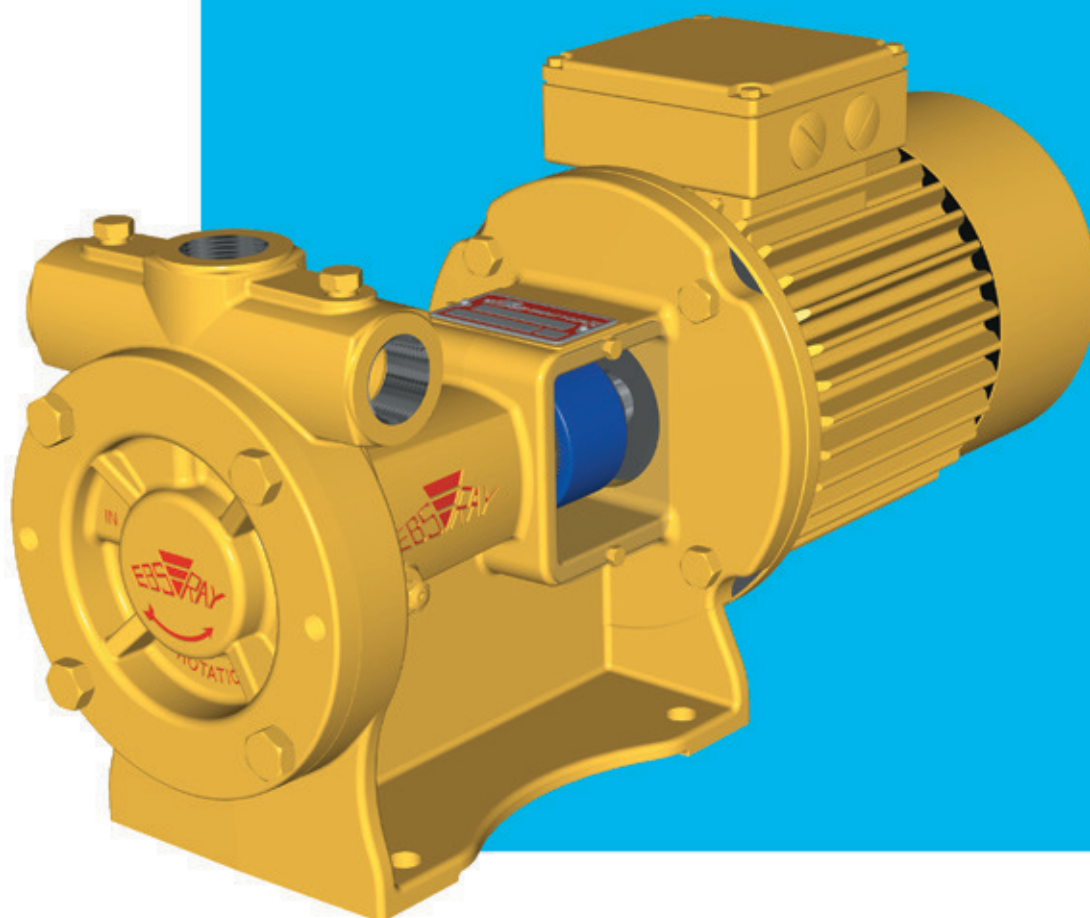


EBSRAY PUMPS



R Series Model RC25

. . . for LPG Applications

Quality System
Quality
Endorsed
Company
ISO 9001
Lic 3332
Standards Australia

Head Office and Works

EBSRAY
AUSTRALIA

liquipsales
NZ LIMITED

R Series Model RC25



THE EBSRAY MODEL RC25 REGENERATIVE TURBINE PUMP is designed and precision built for high pressure transfer of LPG, Propane, Butane, Autogas, DME etc.

SPECIFICATIONS

Max Flow @ 2900 RPM	90 L/min
Max Diff' Pressure	1000 kPa (10 Bar)
Pump Speed (Max)	3500 RPM
Power Range	1.5, 2.2, 3.0 kW Motors
Port size (inlet/outlet)	1" NPT 90° or 180°
Hydrostatic Test Pressure	7000 kPa (70 Bar)

FEATURES

- ▶ Quiet, vibration free operation
- ▶ Low maintenance - single stage impeller
- ▶ Close Coupled to standard IEC frame B5 Flange mounted 2-pole motors-EEExe or EEExd protection
- ▶ Simple installation, rigid mounting
- ▶ Versatile 3-port arrangement - self venting design
- ▶ Bypass Valve connection port direct on pump
- ▶ Balanced Mechanical Seal - unique cartridge design for simplicity of assembly / maintenance
- ▶ Pressure Casings Ductile Iron ASTM Grade A395
- ▶ Throttle Bush - increased safety meets API 610

TYPICAL SERVICES

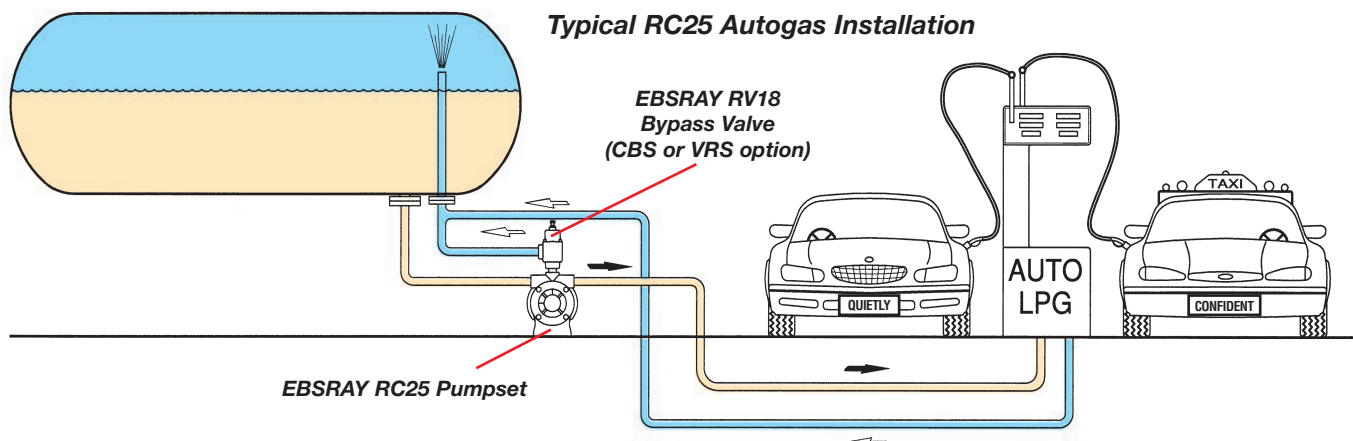
- Autogas refuelling
- Cylinder filling
- Portable tanks
- Marine dispensing
- Direct burner/vaporiser feed
- Forklift refuelling
- Aerosol industries
- Industrial dispensing
- Driveway dispensing- up to 2 hoses

ASSURED QUALITY AND PERFORMANCE

EBSRAY's Quality System, based on ISO 9001, assures compliance with the high safety and quality standards demanded by the LPG industry.

All EBSRAY RC25 pumps are hydrostatically tested after assembly. They are then run tested to simulated duty point prior to dispatch to guarantee pump integrity and performance in accordance with the specifications.

Typical RC25 Autogas Installation



Features

PORTS

- 3-Port, 90° or 180° configuration – NPT screwed
- Self-venting design for rapid priming
- 'Spare' discharge port for Bypass Valve attachment
- Inlet / Discharge gauge tapings

IMPELLER

- Axially self-aligning, single stage, hydraulically balanced
- Quiet, vibration-free operation
- Tough Gunmetal Bronze material (Cast Iron optional)

SHAFT

- Rigid design, low deflection
- High tensile alloy steel
- Precision ground surfaces
- 'Quill' concept facilitates one-piece assembly of Shaft, Cartridge, Mechanical Seal and Bearings independently of pump, or stocked as a 'spare part'

SHAFT SEAL

- Unique, simple assembly – for rapid in-situ servicing
- Carbon / Niresist 'balanced' sealing faces – precision lapped
- 'O-Ring' sealed
- Circlip location for fixed axial seal setting position
- Positive 'pin' drive facilitates assembly simplicity

CARTRIDGE

- New concept for ultra-simple field maintenance incorporating:
 - Ability to pre-assemble Seal Seat in Cartridge outside of pump
 - Throttle Bush for increased safety - complies with API 610
 - Secondary Shaft Seal in Viton for extra protection to Ball Bearing

SHAFT COUPLING

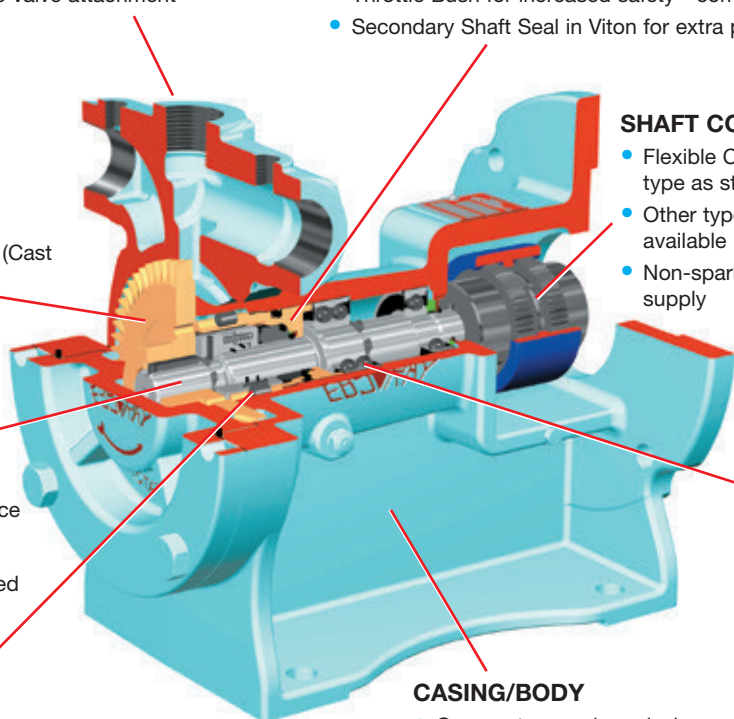
- Flexible Coupling - non-sparking gear-type as standard option
- Other types of flexible coupling available
- Non-sparking Coupling Guard standard supply

BEARINGS

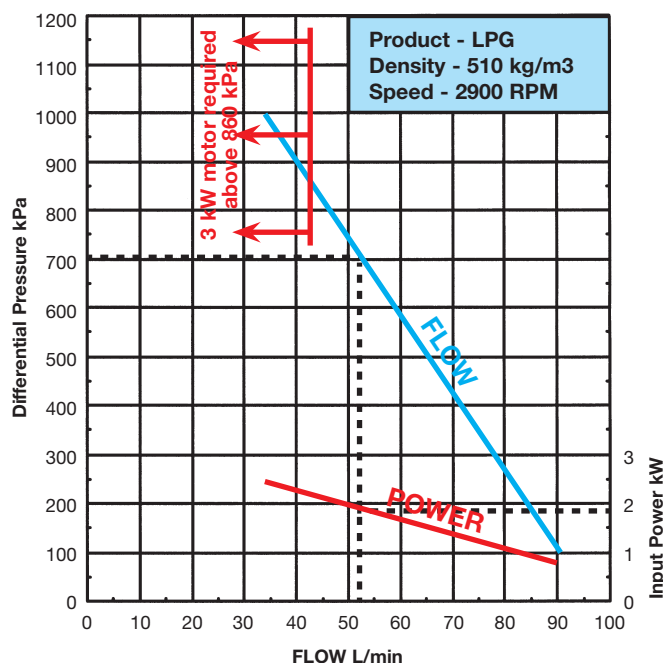
- Heavy Duty, deep groove Ball Bearings
- Grease packed, sealed-for-life
- Extra protection by secondary Shaft Seals against dust or LPG entry

CASING/BODY

- Compact, one-piece design
- Mounting flange for close-coupling IEC B5 frame motors
- Robust construction for motor and pipeline stability/rigidity
- Ductile Iron to ASTM A395
- 'O-Ring' sealed, simple to service
- Hydrostatically tested to 70 Bar after assembly



Performance



EXAMPLE

Differential Pressure	700kPa (7 Bar)
Flow	52 L/min
Input Power	1.85 kW
Pump Speed	2900 RPM

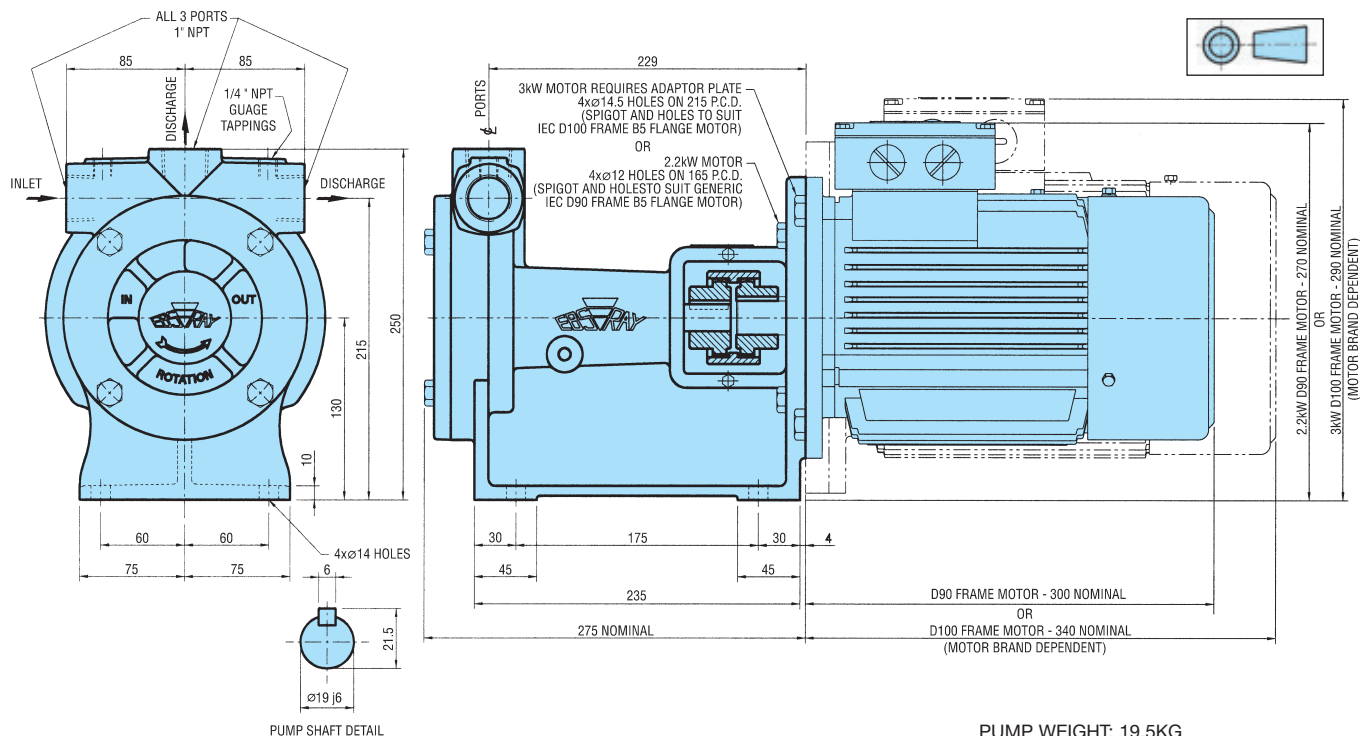
Note:

For 60 Hz (3500 RPM) operation, Refer to specific performance curve

All Ebsray R Series LPG Pumps, Pumpsets and Bypass Valves are designed and manufactured in Australia to the requirements of Australian, European and other International Standards and Codes

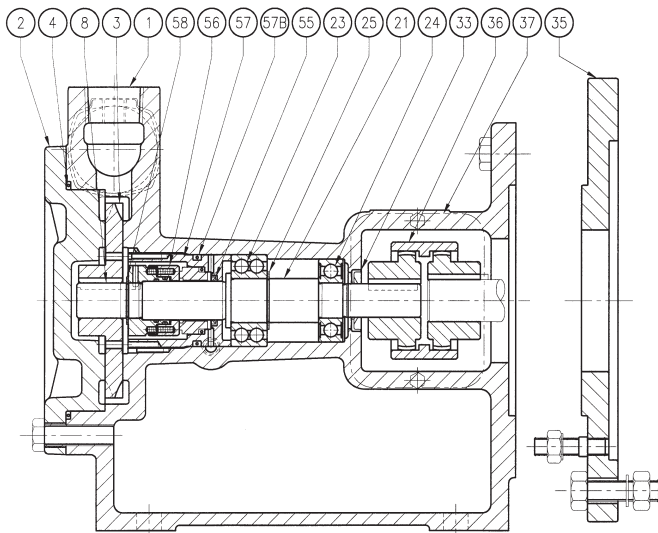


Dimensions



PUMP WEIGHT: 19.5KG
PUMPSET WEIGHT: 19.5KG + MOTOR WEIGHT

Parts Designation



Cat#	Description	Material	Qty
1	Body	Ductile Iron	1
2	Cover	Ductile Iron	1
3	Impeller	Gunmetal	1
4	'O' Ring - Cover	Nitrile	1
8	Impeller Key	Steel	1
21	Shaft	Alloy Steel	1
23	Ball Bearing	Commercial	1
24	Ball Bearing	Commercial	1
25	Circlip	Spring Steel	1
33	Dust Seal	Nitrile	1
35	Motor Adaptor Kit		
36	Coupling Assembly	Cast Iron/Nylon	1
37	Coupling Guard	Aluminium	2
55	Secondary Seal	Viton	1
56	Mechanical Seal Assembly	Carbon/Niresist/viton	1
57	Cartridge	Gunmetal	1
57B	'O'ring - Cartridge	Nitrile	1
58	Circlip	Spring Steel	1

Note: All specifications and illustrations are typical only and subject to revision without notice.
Certified data available on request

DISTRIBUTED BY:



Wellington Head Office: 90 Sydney St, PO Box 38 720
Petone, Wellington, Tel: 64 4 568 4933, Fax: 64 4 568 4789
Email: sales@liquip.co.nz Website: www.liquip.co.nz

EBS-RAY PUMPS PTY. LIMITED

ABN 52 000 061 003

Head Office and Works
628 Pittwater Road
Brookvale NSW 2100
Australia.

Branch Office Victoria
Phone: (03) 9706 7263
Fax: (03) 9706 7312

Telephone: (+612) 9905 0234
Fax: (+612) 9938 3825
www.ebsraypumps.com.au

Branch Office Queensland
Phone: (07) 3260 7411
Fax: (07) 3260 7422



Quality
Endorsed
Company
ISO 9001
Lic 3332
Standards Australia

Head Office and Works

