

EBSRAY PUMPS



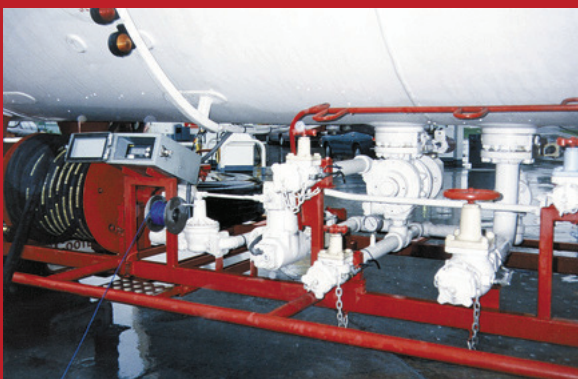
Quality System
Quality
Endorsed
Company
ISO 9001
Lic 3332
Standards Australia
HEAD OFFICE AND WORKS

V Series
Model V3000
...for LPG Truck Applications

liquipsales
NZ LIMITED

EBSRAY
AUSTRALIA

V Series Model V3000



The EBSRAY Model V3000 Flange Mounted Rotary Sliding Vane Pump is designed and precision built for efficient handling of LPG, Propane, Butane, DME, Anhydrous Ammonia etc. Foot mounted Model also available.

Interchangeability

Upgrading to the Ebsray V3000 pump from other commonly used pumps is simple. No pipework, drive or mounting modifications are necessary, in some cases the V3000 is dimensionally interchangeable - you may even retain your existing pump adaptor flanges!

Features

- ✓ Flanged inlet porting - oversized for maximising flow rates at low NPSH conditions.
- ✓ Computer optimised Liner design for anti-cavitation, quiet and pulse-free operation - in hardened Ductile Iron.
- ✓ Pressure retaining elements (Casing, Covers etc.) in Ductile Iron ASTM grade A 395.
- ✓ Vanes in moulded Univane™ material - engineered synthetic composite - for increased service life.
- ✓ Large diameter Pushrods in Unirod™ material - engineered synthetic composite - for positive vane actuation.
- ✓ Heavy duty Double Row Deep Groove Bearings - extended life for PTO, horizontal or vertical mounting.
- ✓ Simple-to-install Mechanical Seal - proven, reliable operation - easy access by removal of Bearing Housing.
- ✓ Reversible Wearplates - ground surfaces, double service life - in toughened Cast Iron.
- ✓ Integral Pressure Relief Valve - quiet operation, low rise, with tamperproof adjustment. 800-1300kPa as standard - other pressure ranges available.
- ✓ Casing 'O' rings for positive sealing.
- ✓ Low maintenance - simple to service - no shims, no special tools required.
- ✓ Increased safety with innovative Seal and Throttle Bush design.
- ✓ Computer optimised design for maximum strength & minimum weight.

Typical Services

Bobtail Tanker Truck duties
Bulk Transport applications
Cylinder filling operations from Tanker Trucks
Bulk transfer and filling operations in Terminals, Depots etc
Emergency Vehicle duties
Portable Tank - load-in, load-out.
Autogas, Industrial, Agricultural, Aerosol Industries

Assured Quality and Performance

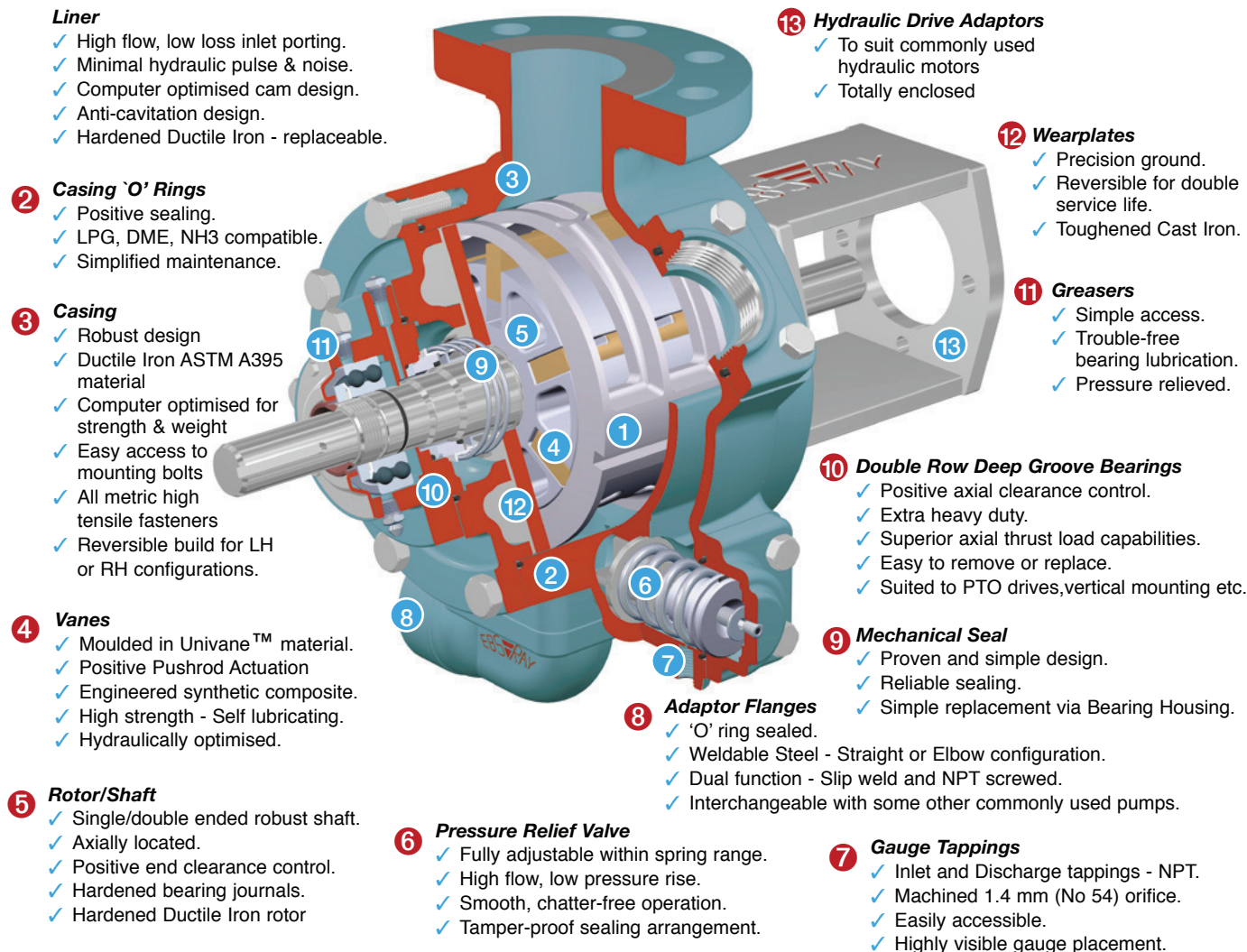
EBSRAY's ISO 9001 Quality System assures compliance with the high safety and quality standards demanded by the LPG Industry.

All EBSRAY V3000 pumps are manufactured under strict guidelines and procedures. Quality checks during production guarantee pump integrity and performance in accordance with the specifications.

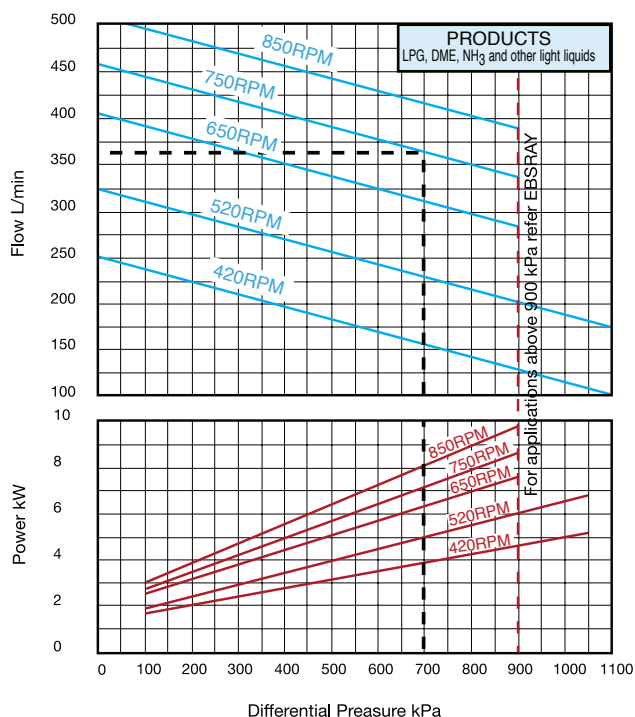
All Ebsray LPG Pumps are designed and manufactured in Australia and comply with the requirements of Australian Standard AS 1596

Engineered in Australia

Features



Performance



Example:

Speed 750 RPM
 Differential Pressure 700 kPa
 Flow 360 L/min
 Input Power 7.1 kW

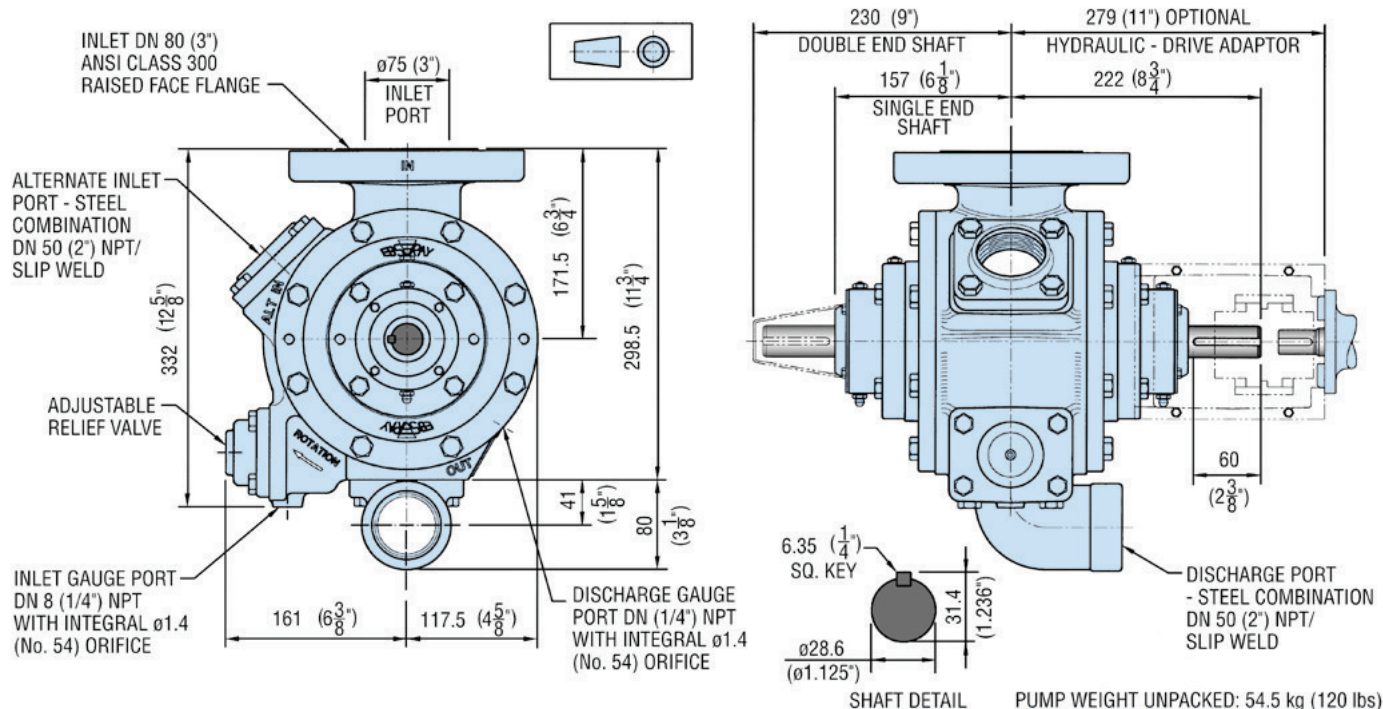
Approximate LPG Flow Rates attainable when adequate NPSH is available. Other factors such as product mix/composition, temperature, etc. may also affect performances.

For higher flow rates, refer to EBSRAY.



Dimensions (For Foot mounted Model, refer EBSRAY)

Model V3000 Pump



Materials/Specifications

Materials of Construction

Casing	Ductile Iron ASTM A395
Adaptor Flanges	Steel - (weldable grade)
Liner.....	Hardened Ductile Iron
Wear Plates.....	Toughened Cast Iron
Rotor/Shaft	Hardened Ductile Iron/Alloy Steel
Vanes	Univane™ Synthetic Composite
Pushrods.....	Unirod™ Synthetic Composite
Bypass Valve	Cast Iron
Mechanical Seals	Carbon/Cast Iron
Elastomers	Nitrile - (Viton optional)

Specifications

Max Flow	515 L/min
Max Differential Pressure	1,050 kPa
Max Working Pressure	2,400 kPa
Max Pump Speed	850 RPM
Hydrostatic Test Pressure	7,000 kPa
Port sizes (Inlet)	3" ANSI Class 300 Raised Face Flange
(Discharge)	2" dual function NPT Screwed/Slip Weld Adaptor Flange - Straight or Elbow Configuration
(Alternate Inlet)	As per Discharge Port

NOTE: All specifications and illustrations are typical only and subject to revision without notice. Certified data available on request

DISTRIBUTED BY:



Wellington Head Office: 90 Sydney St, PO Box 38 720
Petone, Wellington, Tel: 64 4 568 4933, Fax: 64 4 568 4789
Email: sales@liquip.co.nz Website: www.liquip.co.nz

EBS-RAY PUMPS PTY. LIMITED

ACN 000 061 003
Head Office and Works
628 Pittwater Road
Brookvale NSW 2100
Australia.
Telephone: (61 2) 9905 0234
Fax: (61 2) 9938 3825
www.ebsraypumps.com.au

Branch Office Victoria
Phone: (03) 9706 7263
Fax: (03) 9706 7312
Branch Office Queensland
Phone: (07) 3260 7411
Fax: (07) 3260 7422



Quality
Endorsed
Company

